



| | | | |
|---------------|--|---------------|---|
| PROJECT NAME: | BVSD Birch Elementary School | DATE: | 6 May 2009 |
| NOTES BY: | Wells Squier | PROJECT #: | 509023.00 |
| MEETING #: | 004 | NEXT MEETING: | Wed, May 20, 2009 3:15 PM |
| ATTENDEES: | Tracy Stegall - BES Tammie Hill - BES Tom Schiola - BES Kim Hohensee - BES Lisa Boston - BES Kort Hedges - BES Beth Murphy - BES Gabriella Ruelez - Parent Denise Sorensen - Parent David Jorschumb - BVSD Charles Zachemsky - A+P Will Valkner - A+P Kelly Yamasaki - OZ Architecture Kate Fields - OZ Architecture Wells Squier - OZ Architecture | DISTRIBUTION: | Attendees Consultants Ellie McKinley - Comm. Member Lisa Abeyta - Parent file. |

The aforementioned minutes constitute our understanding of the items discussed. If this is not an accurate written description of the intent and results of this meeting, please contact this office with comments. The minutes will stand as a record of the meeting unless corrections are received within seven (7) days after receipt.

| ITEM # | DESCRIPTION | RESPONSIBILITY | DEADLINE |
|--------|--|----------------|----------|
| 1. | <p><u>Meeting Start</u> Review of previous meeting minutes – no corrections.</p> | Info. | |
| 2. | <p><u>Scope Definition</u> OZ reviewed the CBOC/Requirement list with updated values of work reflected under Schematic Design based on DAT discussions of needs. This list will continue to be a work in progress for our budget and a design scope reference. OZ presented the primary scheme "A" which was previously \$1million over budget. With refinement and District commitment to pay for Ramps, Fire Sprinklers and Asbestos abatement we are still \$274,435 over budget. A further review of the FCA list resulted in some additional savings as the IT closet has HVAC (\$14,300) and under Interior Finishes, the corridor carpet was recently redone (\$16k saving). OZ is worried that we are too over budget to count on "Bid Climate" savings. The hope is that the DAT will be able to earmark work to equal this value as Bid alternates. The Design Team recommendations were to drop the value of the Architectural "skin" to save about \$100,00 and to show the UV's at 4th & 5th grade as a bid alternate. The DAT really felt that the HVAC improvements were too critical to risk not getting included in the project, and they were unable to earmark anything else as an alternate. OZ presented Scheme "B" as a possible alternative approach which</p> | Info. | |



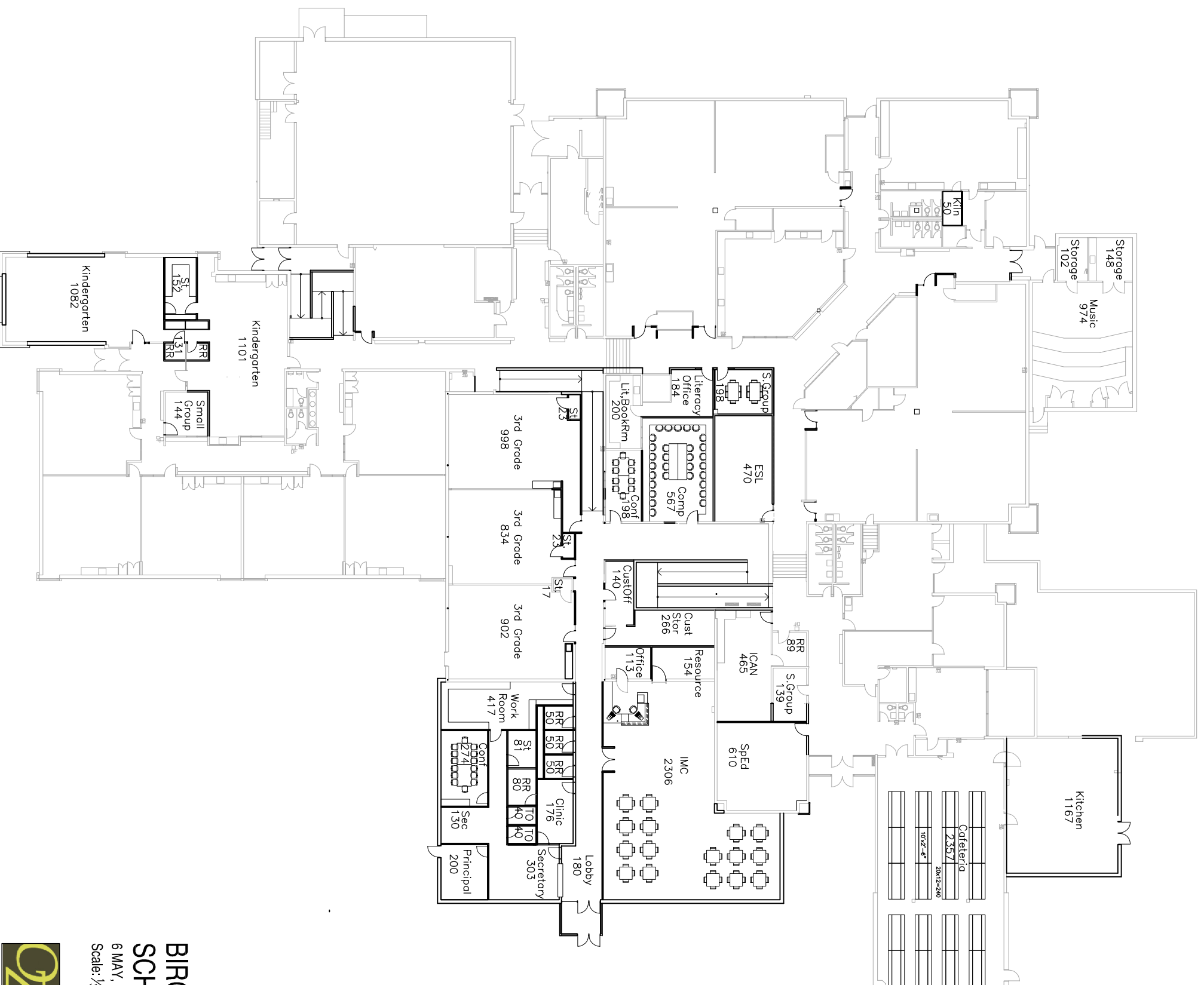
| ITEM # | DESCRIPTION | RESPONSIBILITY | DEADLINE |
|--------|---|----------------|----------|
| | <p>should save money by leaving the Cafeteria, 3rd grade and Kindergarten in their current locations and hence effectively doing less remodel work. A&P had not had the opportunity to price this scheme as it was developed just before the meeting.</p> | | |
| 3. | <p><u>Scheme A:</u> Two additions and an extensive remodel as follows:</p> <ol style="list-style-type: none"> a. Provide accessible route between all levels by installing 3 ramps. (Constant in A&B) b. Locate Admin and main entry to the main level addition. (Constant in A&B) c. Relocate the Cafeteria/Kitchen to the main level addition. d. Relocate Kindergarten to the cafeteria/kitchen space. Remodel with a shared new restroom and storage between the classrooms. e. Provide a corridor addition as an exit, classroom entry and coat zone for Kindergarten. This includes a small storage room south of the corridor. f. Remodel Admin area as Special Ed and ICAN classrooms. ICAN to have an ADA restroom with access from the corridor and classroom. Existing Jan office to remain as storage. (Constant in A&B) g. Remodel current 3rd Grade as the IMC – this includes an office and access to a shared faculty work room. h. Third grade addition over outdoor play area to allow for relocation of 3rd grade to the current Kindergarten wing. i. Remodel Kindergarten with a direct corridor connection to the exterior, three 800sf classrooms and a small group room. j. Remodel 3rd grade Special Ed room to janitor office and storage, plus cafeteria and B&A School storage. k. Remodel IMC to computer room/ ESL/ Conference room/ Literacy and Small group room. (Constant in A&B) l. Remodel existing Special Ed to Music – remove booth/over framed step, replace carpet at (e) risers. Move (e) tack board at front of classroom to back of classroom, add a new 6' white board on the front wall between the storage rooms, provide a map rail capable of hanging 3 maps at front of classroom, paint front wall, sound system, and instrument storage lockers/shelving in storerooms. (Constant in A&B) m. New drive and parking in front of school – to include a delivery and trash zone for the kitchen. <p>PROS:</p> <ul style="list-style-type: none"> Windows in 3rd grade All common elements on "Main" floor Kindergarten & Preschool next to each other Shared Kindergarten & preschool playground Better Kindergarten drop off More control/security for Community School use. Better circulation at Lower grades <p>CONS:</p> <ul style="list-style-type: none"> Smaller 3rd grade More work & more disruption Tough Phasing Over budget | | |



| ITEM # | DESCRIPTION | RESPONSIBILITY | DEADLINE |
|--------|---|----------------|----------|
| 4. | <p>Scheme B: Three additions and a less extensive remodel as follows:</p> <ul style="list-style-type: none"> a. Provide accessible route between all levels by installing 3 ramps. (Constant in A&B) b. Relocate Admin and main entry to the main level addition. (Constant in A&B) c. Relocate IMC in new main level addition. d. Relocate the Kitchen to the west of its existing location and renovate the cafeteria in the old Kitchen area. e. Existing main entry to remain as secondary entry – access to playgrounds route to be similar but will need safety devices to keep kids and vehicles separated. n. Remodel Admin area as Special Ed and ICAN classrooms. ICAN to have an ADA restroom with access from the corridor and classroom. Existing Jan office to remain as storage. (Constant in A&B) o. 3rd Grade to remain in current location with the addition of walls, doors, storage closets and casework (with sinks). p. Kindergarten remodel in existing location with a shared new restroom and storage between the classrooms. q. Addition over outdoor play area to allow for expansion of Kindergarten wing. r. Circulation remains as is at K, 1st and 2nd s. Add a small group room in K remodel. t. Remodel 3rd grade Special Ed room to janitor office and storage, plus Library office and resource storage. u. Remodel IMC to computer room/ ESL/ Conference room/ Literacy and Small group room. (Constant in A&B) v. Remodel existing Special Ed to Music – remove booth and over framed step to support it, replace carpet at (e) risers. Move (e) tack board at front of classroom to back of classroom, add a new 6' white board on the front wall between the storage rooms, provide a map rail capable of hanging 3 maps at front of classroom, paint front wall, sound system, and instrument storage lockers/shelving in storerooms. (Constant in A&B) w. New drive and parking in front of school – to include a delivery zone for UPS/FEDEX. <p>PROS:</p> <ul style="list-style-type: none"> Proximity of Faculty Lounge to Cafeteria Better loading & trash – out of sight & less cross traffic More direct playground access from cafeteria - same as existing flow. Same preschool access Same small group configurations HVAC upgrades Windows in the IMC Possible savings to allow for wish list items such as Playground and carpet at 1st & 2nd grade <p>CONS:</p> <ul style="list-style-type: none"> Cafeteria is remote (also considered a pro) No secure or dedicated Kindergarten aged playground Same Kindergarten drop off – remote | Info. | |



| ITEM # | DESCRIPTION | RESPONSIBILITY | DEADLINE |
|--------|---|----------------|----------|
| 5. | <p><u>DAT Recommendations:</u> A vote revealed that the entire group would rather pursue Scheme "B". It was also determined that the group was disappointed not to be getting Scheme "A", but in the interest of getting the most for their money Scheme "B" was deemed an acceptable compromise. OZ & A&P will further develop the plan and the pricing and circulate this information prior to our next meeting.</p> | Info. | |
| 6. | <p><u>MUOF:</u> This scope will be reviewed at our next meeting.</p> | Info | |
| 7. | <p><u>DAT Meeting Schedule</u></p> <ul style="list-style-type: none"> DAT#5 Wed, May 20, 3:15pm Final Plan review Exterior Elevation Ideas Playground Presentation DAT#6 Wed, May 27th, 3:15pm Interior Concepts and materials DAT#7 Mid July - During Summer Holiday ONLY if necessary DAT#8 Wed, August 26, 3:15pm DAT#9 Wed, August 26, 3:15pm DAT#10 Fri, November 20, 3:15pm Bid Review ONLY if necessary | Info. | |



BIRCH ELEMENTARY
SCHEME "B"

6 MAY, 2009
Scale: 1/32" = 1'-0"

